

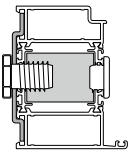
General information about complectation of delivery:

- If possible, doors arrive fully assembled with installed glass from the factory.
- Holes for installation will be predrilled and adjufixes attached on the frame.
- Preparation and insulation of openings of the building should be defined before installation works. It is responsibility of the customer, architect and dealer.
- Installation principles applied in supporting constructions:
 - Flexible (wood/steel studs), min. thickness of wall 95 mm
 - Light rigid (light weight concrete), density: 650 kg/m³ (for EI30) or 550 kg/m³ (for EI60) ± 200 kg/m³
 - Heavy rigid, density min. 850 kg/m³

NB! Read the general guidelines for correct handling of fire rated products.

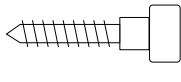
NB! If the product is delivered without mounted glass, see the manual for fitting glass in fire products.

Installation material



1. Adjufix

Required quantity is already attached to the frame.



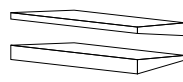
2. Screws

For fastening adjufix to the wall. Not included in delivery.



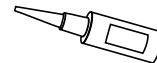
3. Caps

For covering predrilled holes. Included in delivery.



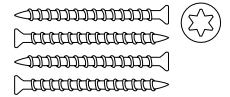
4. Wedges

Oak or other wood with similar density. Not included in.



5. Sealing compound for fire rated doors P/N 12222.

Included in delivery



6. Screws for threshold fastening.

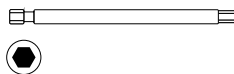
Stainless steel, A2
M5, 100 mm
Required quantity included in delivery

Installation tools

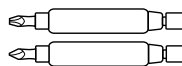
Not included in delivery.



1. Cordless screwdriver



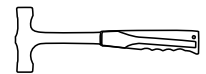
2. Hexagonal screwdriver bit.



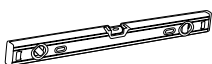
3. Magnetic bits



4. Drill



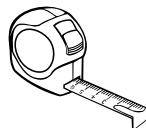
5. Light hammer



6. Spirit level



7. Angle

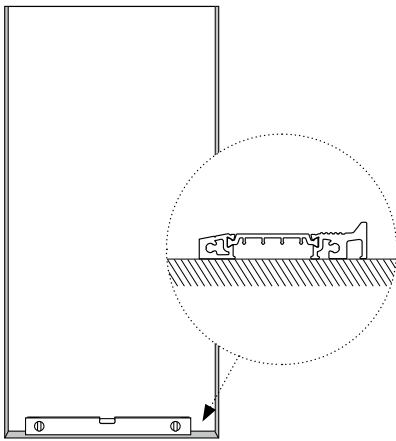


8. Tape-measure

Step 1

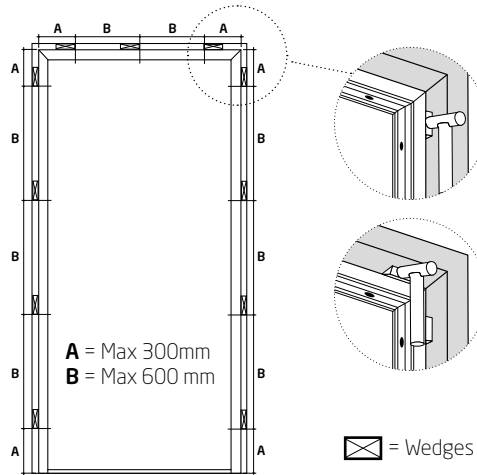
Door installation to the opening

If possible, depending on situation on site, while fixing the frame, opened sash can be supported with no need to remove it out of the frame. If there is no support possibility, please follow sash removal instruction.



Step 1.1 Prepare the opening for installation. The entire base under threshold must be flat and level. If it will be decided to use bearing support beneath the threshold it must be in level and continuous end-to-end.

NB! Water and thermo sealing below the threshold must be considered before installation! Follow recommendations in page 5.

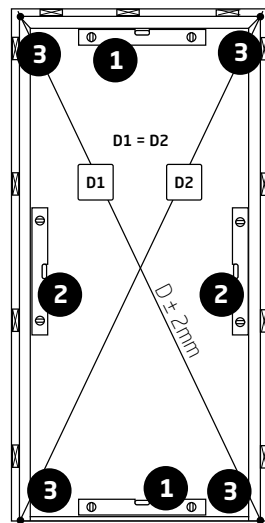


Step 1.2 Fix the frame with wedges.

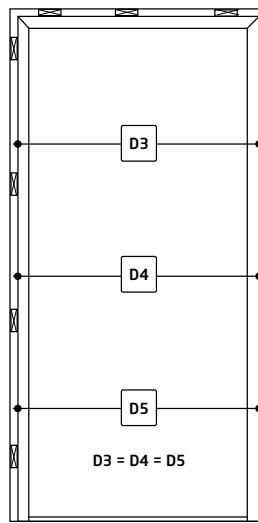
Wedges must be positioned next to each fixing point on the frame and should not be sticking out of the construction's mounting depth.

NB! The gap between the frame and the wall is recommended to leave: 20 (+10;-8) mm

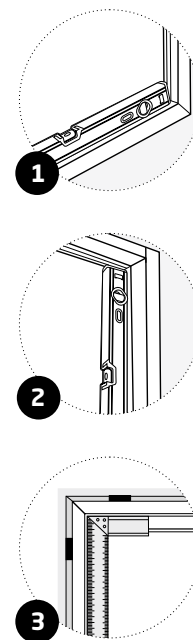
Step 1.3 Ensure horizontal and vertical leveling of the frame.



Frame jambs must be square and plumb in both directions and the diagonals (D1 and D2) should be identical.



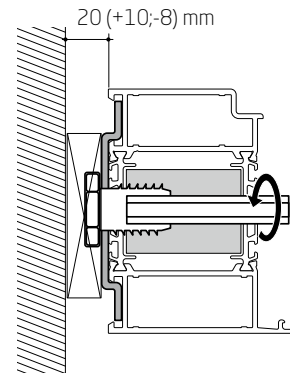
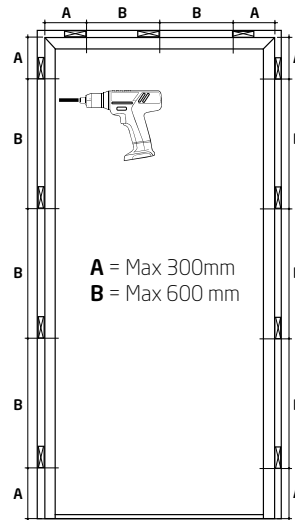
Check the rebate widths are equal across the hinge and locking points (D3, D4 and D5).



Step 1.4 Fix the frame with adjufix sleeves into the opening. Open the sash in 90 degrees and support it while fixing the frame to opening with the help of Hexagonal screwdriver bit. Start from the hinges side!

Attention!

Always use wedges or setting blocks between door frame and wall regardless of chosen installation alternative.



Step 2

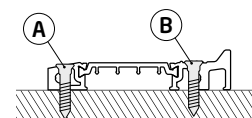
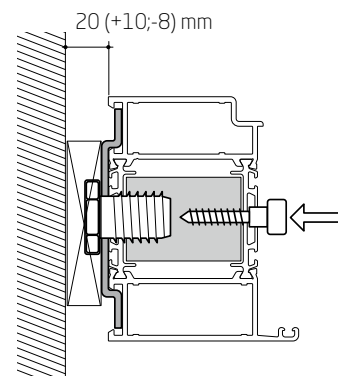
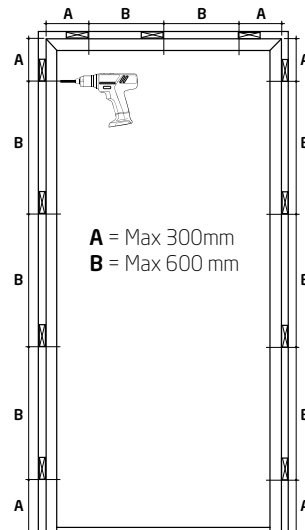
Fasten the door to the wall

Step 2.1 Screw bolts through adjufix sleeves on the frame.

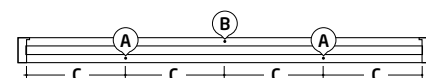
Step 2.2 Fasten the threshold. Screw bolts through predrilled holes on the threshold (8 mm holes will be predrilled in the factory) according to the schemes. At external doors, seal the screws with sealing compound for fire rated doors P/N 12222, between screw and threshold.

Step 2.3 Ensure horizontal and vertical leveling of the frame. Follow STEP 1.3 instructions.

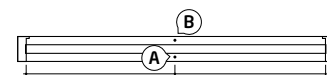
NB! All wedges should be left in places and should not be sticking out of the construction's mounting depth



C = 300 mm

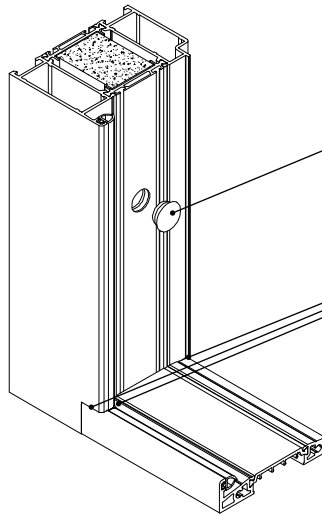


For doors width above 1200 mm



For doors width under 1200 mm

Step 2.4 Cover the holes with plastic caps



Plastic cap has to be sealed with sealing compound for fire rated doors P/N 12222. Applies to external constructions only.

Check if sealing of all grooves between threshold and frame profile is not damaged during installation process.

Complete if necessary with sealing compound for fire rated doors P/N 12222.

Step 2.5 Install the sash back to the frame if it was removed before installation. Follow the sash installation instruction.

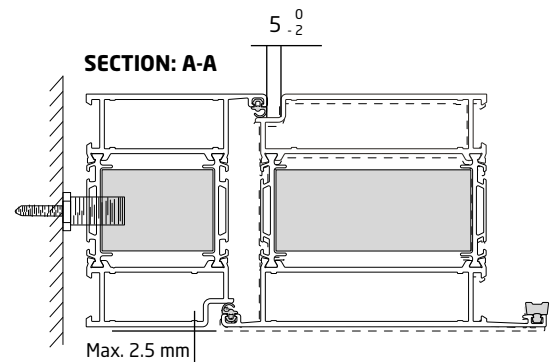
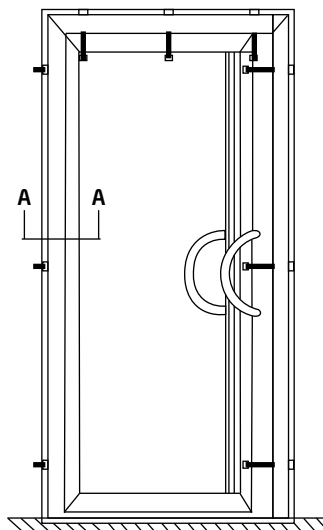
Step 2.6 Adjust tightness of the sash:

Check door leaf and frame

Make sure door leaf and frame flush with each other.

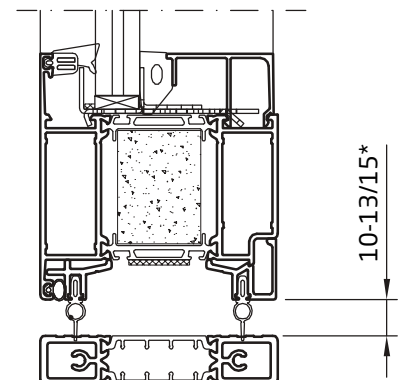
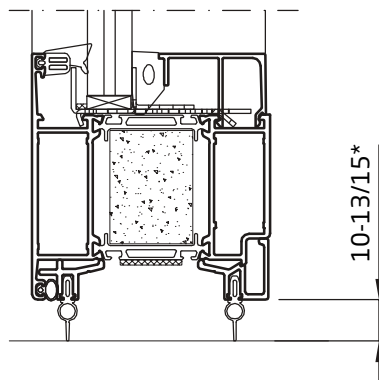
The distance should be $5 \text{ } (0; -2) \text{ mm}$ on all edges of the door leaf.

In order to get the right gasket pressure striking plate has to be adjusted to limit the deflection of the door leaf to max 2,5 mm.

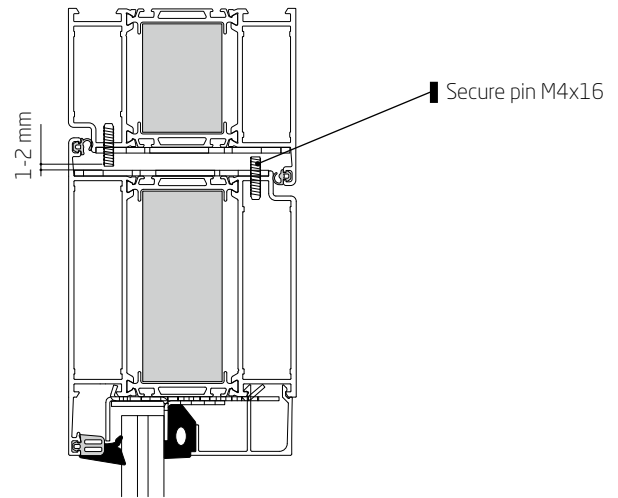


Step 2.7 If door is produced with smoke protection class Sa/S200, Please follow maximum height limitations between door leaf and threshold/floor. Adjust if needed.

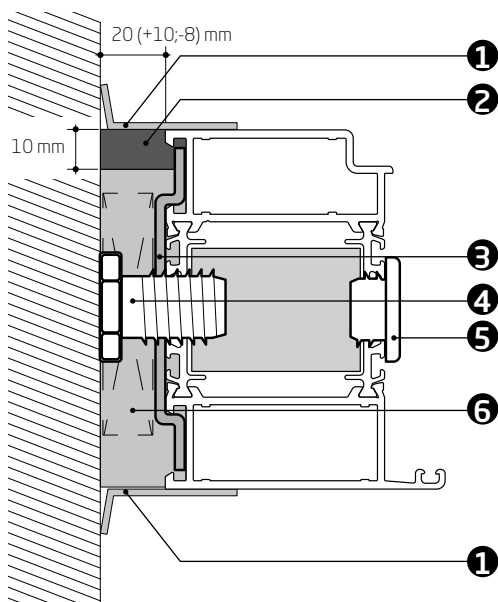
*Height 10-15 mm for Sa
Height 10-13 mm for S200



Step 2.8 Adjust top secure pins M4x16. Check the functionality of sash. Adjust if needed. Screw to be adjusted after the glazing if product was delivered unglazed.



Step 2.9 Ensure the gap between installation hole and door frame is sealed according to the sketch.

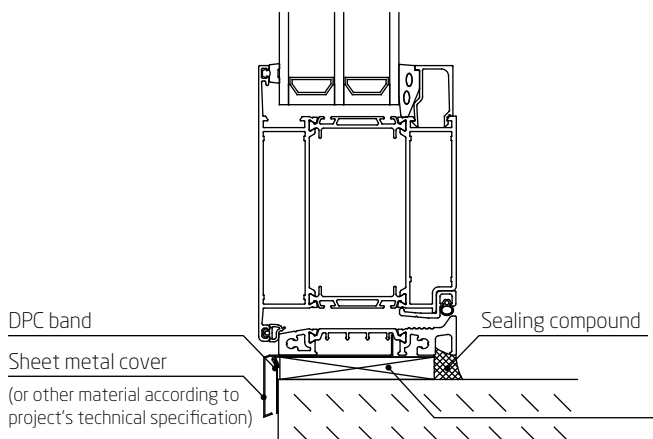


1. Sheet metal cover or other material according to project's technical specification
2. 10 mm sealing compound for fire rated products P/N 1.2222 (used in a case when door is installed in an external wall of the building)*
3. Fixing device 12563
4. Adjufix M16
5. Plastic cover cap (included in delivery)
6. Joint filling with stone wool with density 40 kg/m³

* For partitions with class Sa/S200 sealing compound should be used from expected fire spreading side as well (Applies to internal and external constructions)

NB! Combined installation method (brackets and adjufix) for combinations of fixed frames with doors is possible. Please follow installation manuals according to each mounting method.

In a case if window is combined together with door with class Sa/S200, sealing should be done according Sa/S200 requirements



NB! If it will be decided to use bearing support beneath the threshold it must be in level and continuous end-to-end.